

都道府県名

合併前市町村名

島根県

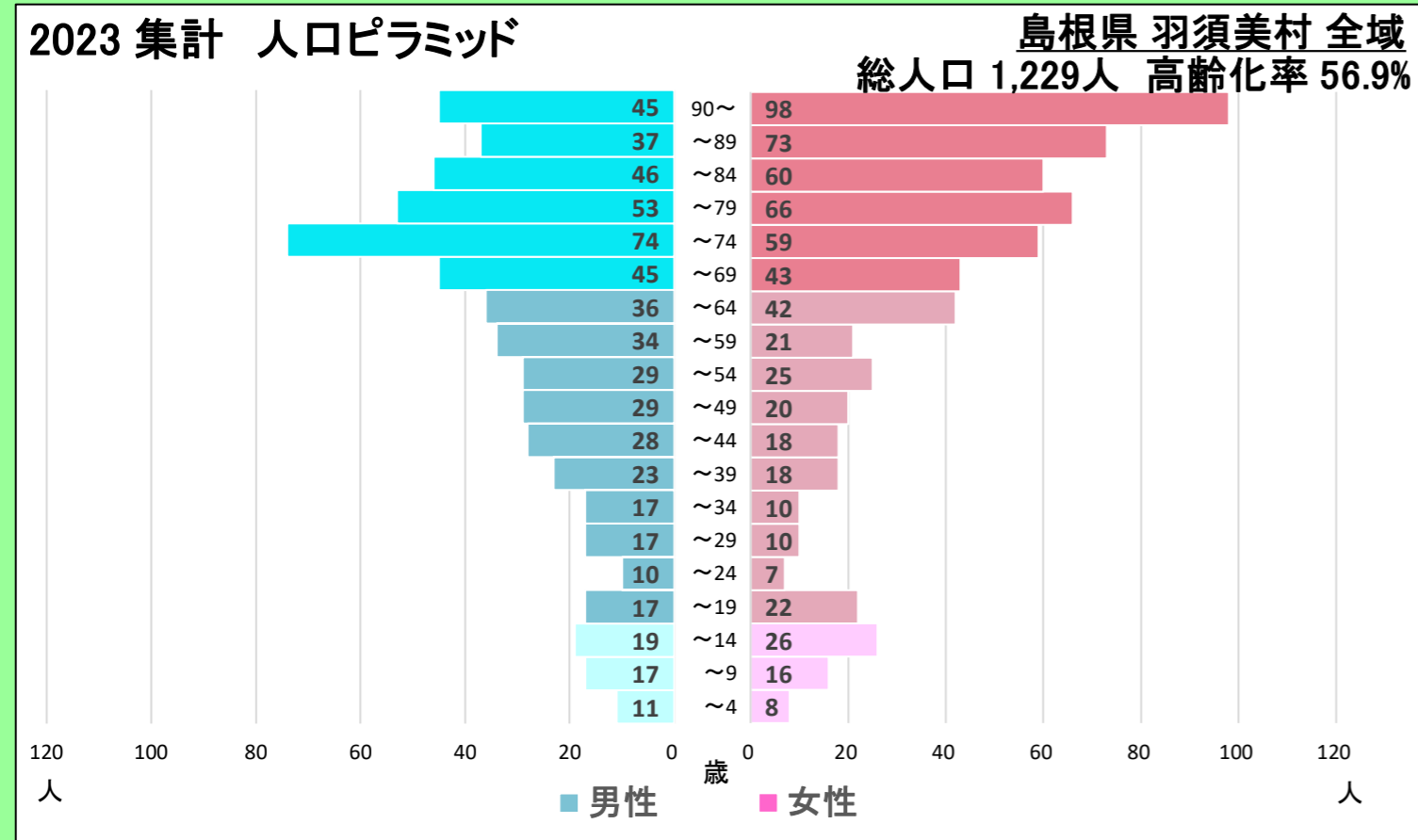
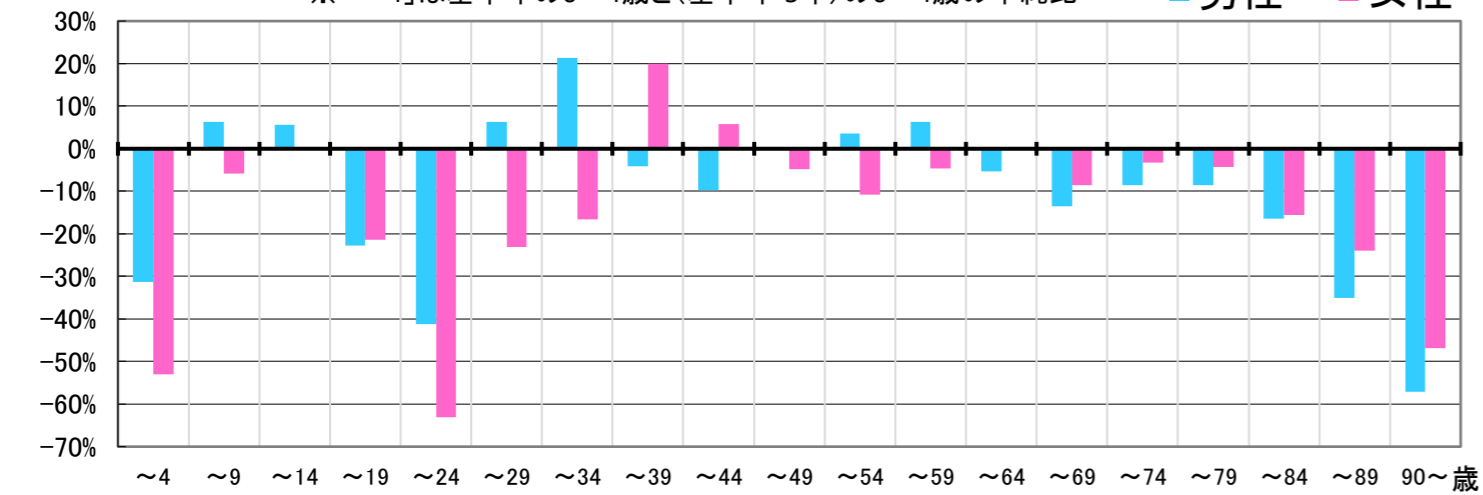
羽須美村

全域

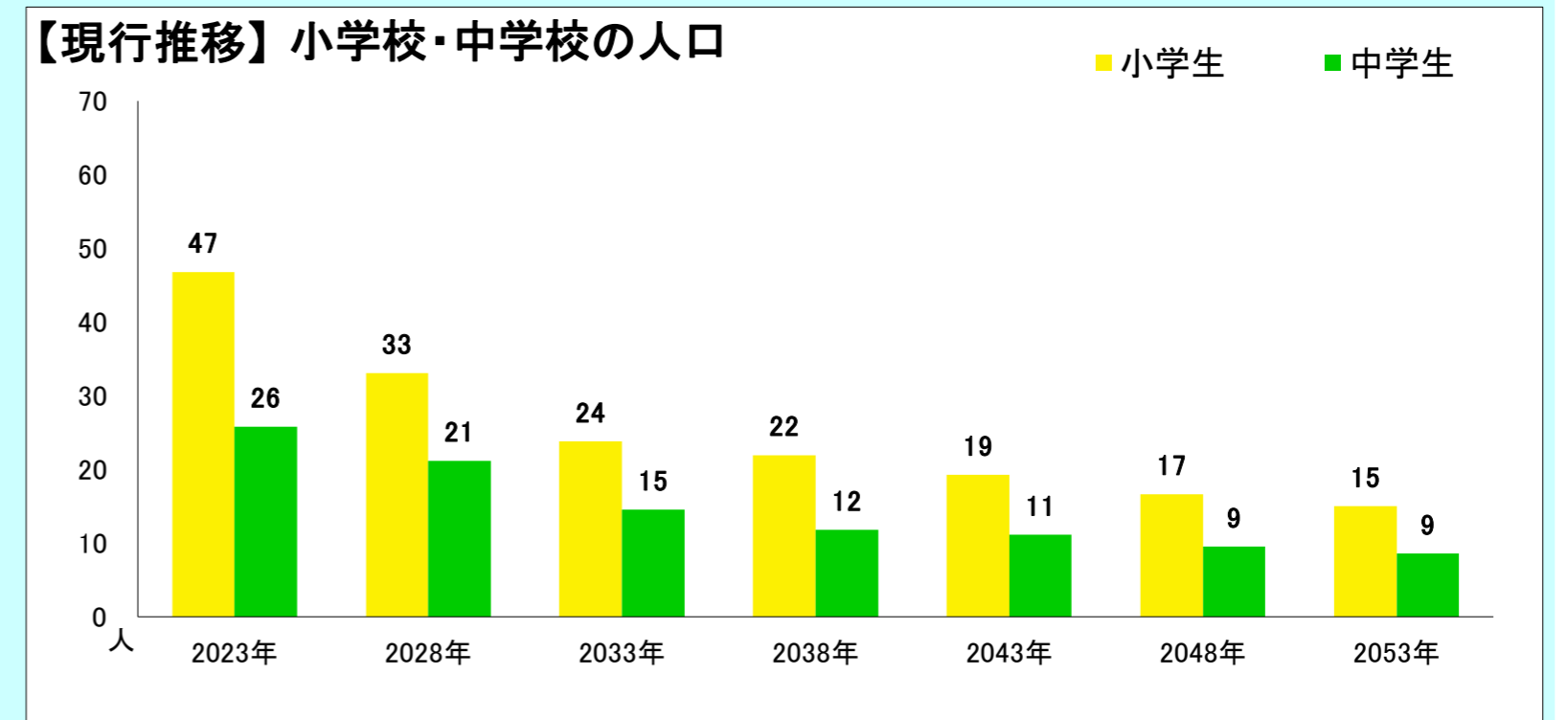
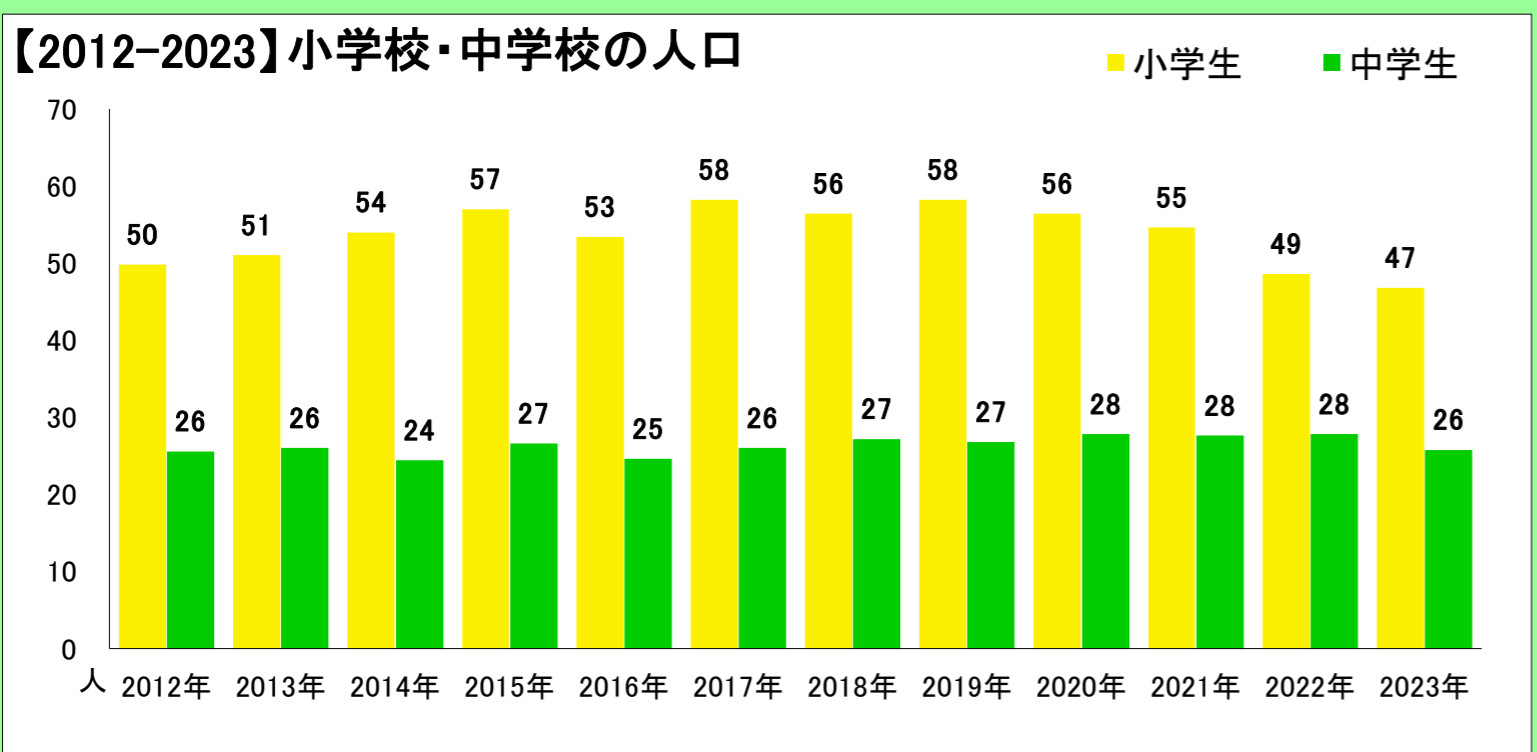
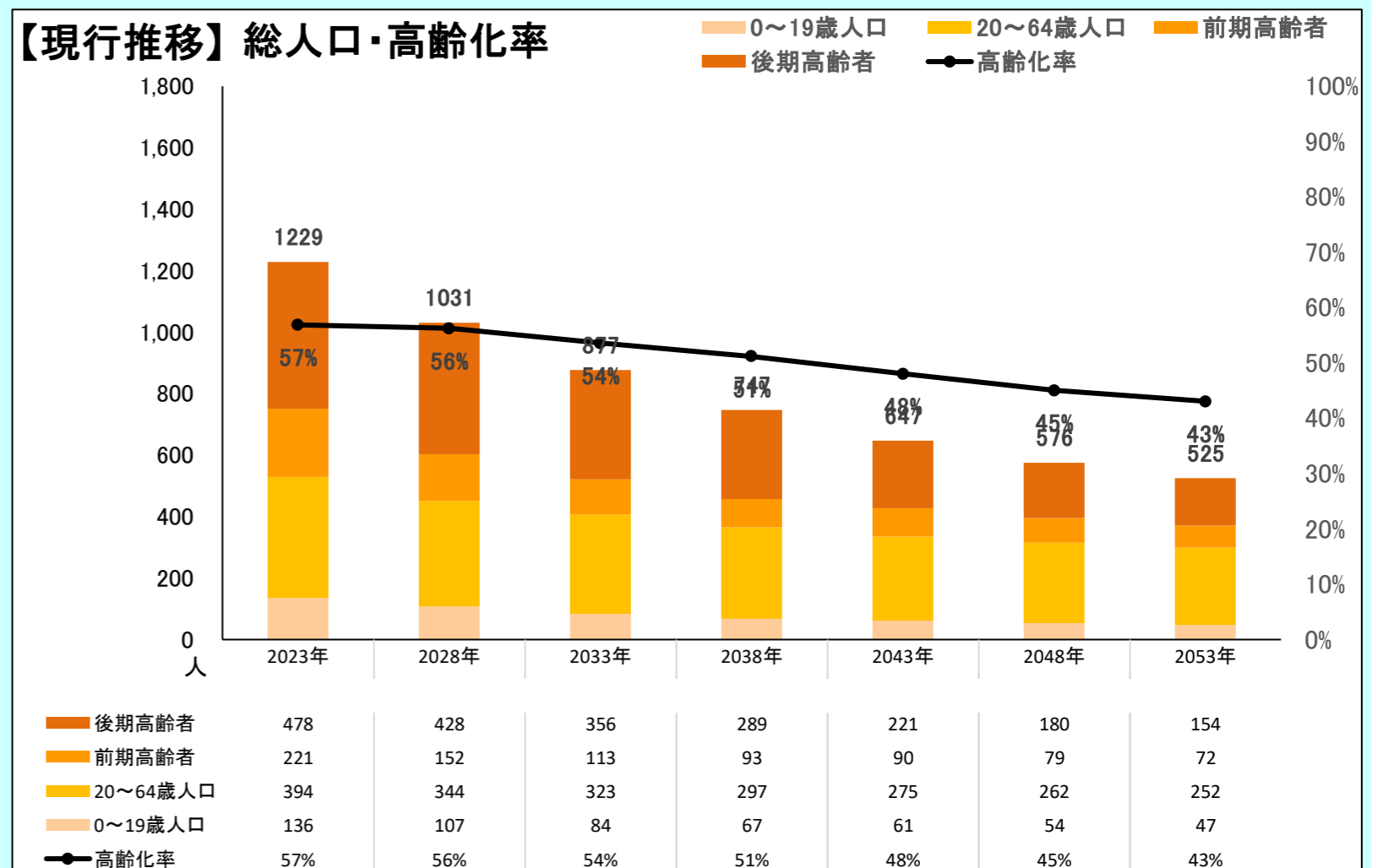
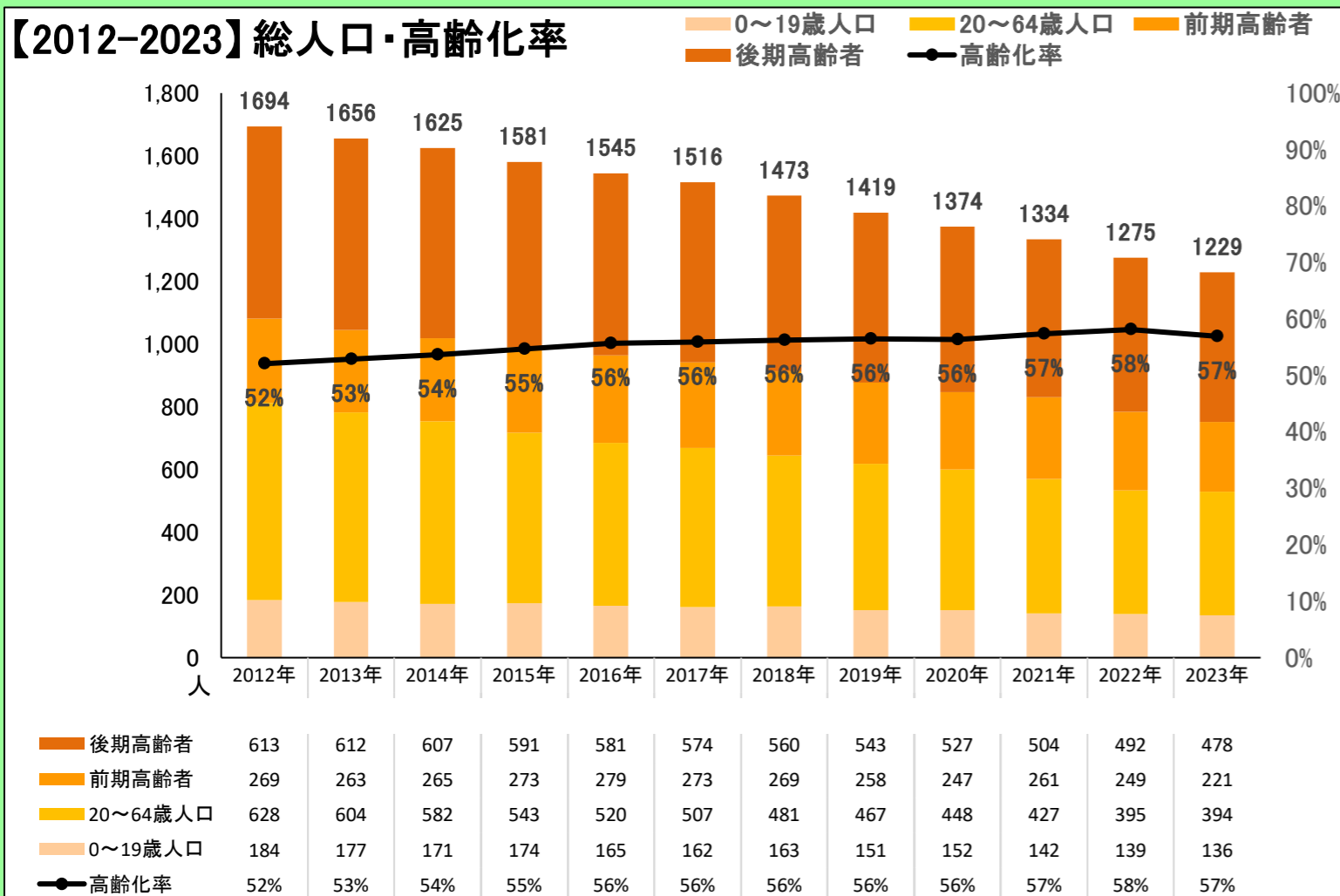
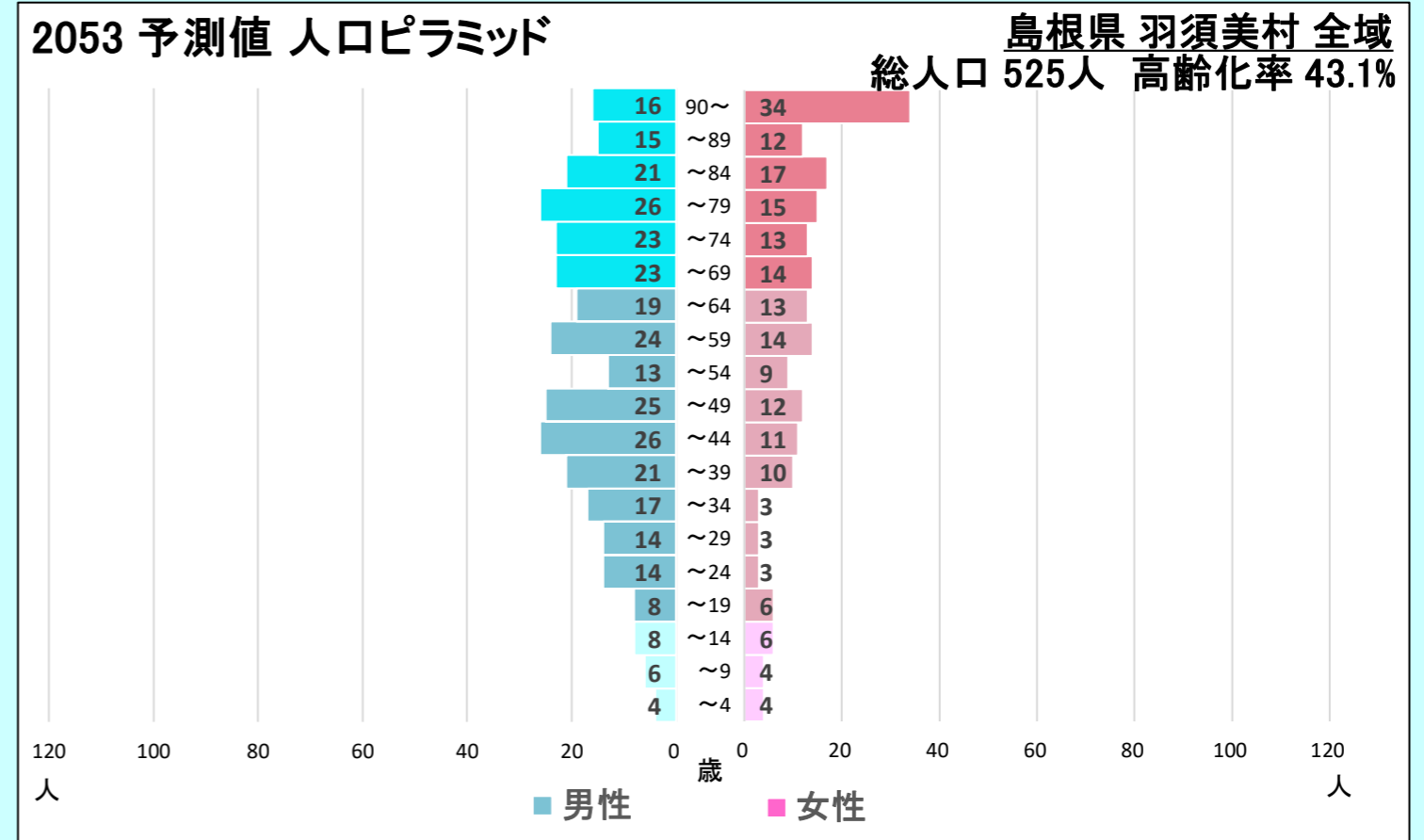
〈地区の情報〉

各コーホートの増減率(2018年→2023年) ※補正値を含める

※「～4」は基準年の0～4歳と(基準年-5年)の0～4歳の単純比



2018年～2023年の変化の傾向が今後も続いた30年後の予測



	2012 2013 2014 2015 2016 2017 2018 2019 2020 2021 2022 2023												将来推計					
	2028	2033	2038	2043	2048	2053												
人口増減率(※)	-	-2.2%	-1.9%	-2.7%	-2.3%	-1.9%	-2.8%	-3.7%	-3.2%	-2.9%	-4.4%	-3.6%	-16.1%	-15.0%	-14.8%	-13.4%	-11.0%	-8.9%
高齢化率	52.1%	52.8%	53.7%	54.6%	55.7%	55.9%	56.3%	56.4%	56.3%	57.3%	58.1%	56.9%	56.2%	53.6%	51.2%	48.0%	45.1%	43.1%
後期高齢者比率	36.2%	37.0%	37.4%	37.4%	37.6%	37.9%	38.0%	38.3%	38.4%	37.8%	38.6%	38.9%	41.5%	40.6%	38.7%	34.1%	31.3%	29.3%
生産年齢人口率	40.5%	39.7%	38.4%	36.9%	36.2%	35.6%	35.1%	35.2%	35.4%	34.6%	34.2%	35.2%	36.8%	40.2%	42.3%	45.3%	48.5%	50.6%
20～30代女性比率	4.3%	4.4%	4.2%	4.0%	4.5%	4.4%	3.9%	3.5%	3.6%	4.0%	3.8%	3.7%	3.7%	3.9%	3.7%	3.9%	3.7%	3.5%
若年齢層率(～14)	7.4%	7.4%	7.9%	8.4%	8.2%	8.6%	8.6%	8.4%	8.2%	8.1%	7.7%	7.9%	6.9%	6.3%	6.5%	6.7%	6.5%	6.4%
4歳以下人口比率	2.5%	2.3%	2.4%	2.4%	2.4%	2.2%	2.2%	1.6%	1.4%	1.3%	1.3%	1.5%	1.6%	1.7%	1.6%	1.8%	1.7%	1.6%

(※人口増減率における2028年以降は5年間の増減率を表記)

